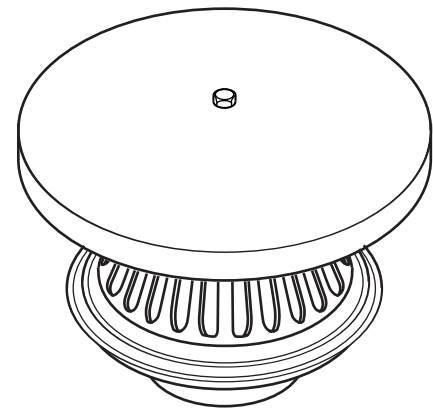


Function:

Pump suction drain for concrete pools. DEFO strainer intercepts debris. Anti-vortex plate prevents air entrainment.

Specification:

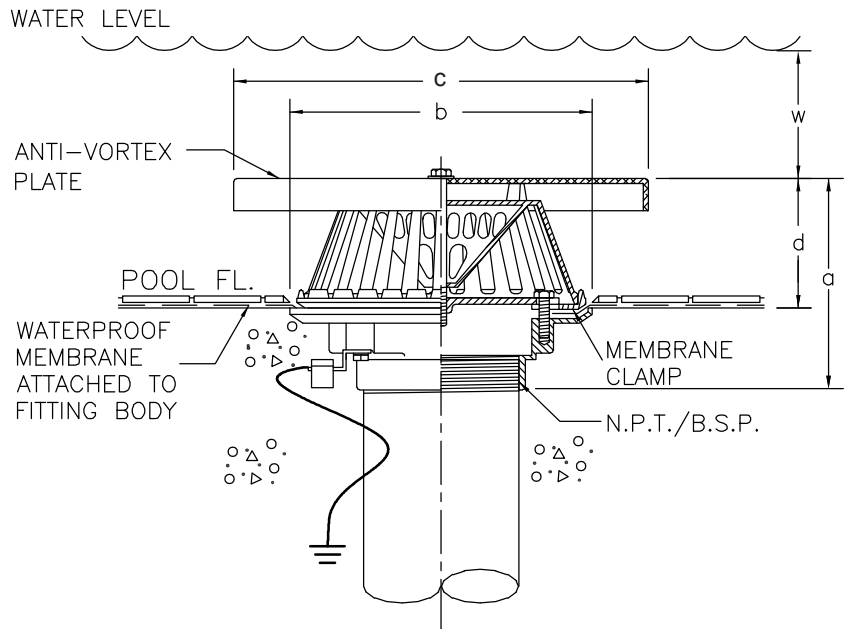
Construction of DEFO suction drain body and secured strainer shall be cast bronze with DEFO opti-bronze textured FRP anti-vortex plate and stainless steel fasteners. "Maxi-flo" strainer shall be low profile and inverted cone shaped.



DSA

Options: (Add suffix)

- A - adjustable flow regulator
- C - cast bronze anti-vortex plate
- D - fine mesh debris strainer
- G - flat grate (no a-v plate)
- L - membrane clamp
- U - underdeck clamp
- V - FRP square anti-vortex plate
- Y - FRP square anti-vortex plate, recessed for tiles



Dimensions

DEFO no.	inlet (npt) (bsp)	a dim.	b dim.	c dim.	d dim.	w dim. min.	strainer free area sq. in.
DSA200	2"	5 1/4"	6 1/2"	8"	3 1/2"	3"	22"
DSA300	3"	6 1/2"	9"	12"	4"	4"	47"
DSA400	4"	6 1/2"	9"	12"	4"	8"	47"
DSA600	6"	6 1/2"	12"	16"	4"	10"	81"
DSA800	8"	10"	14"	16"	7"	10"	150"